

# PINELLAS COUNTY VOTER GUIDE



## 2016 – 17

DEBORAH CLARK  
SUPERVISOR OF ELECTIONS  
PINELLAS COUNTY

# WELCOME

to the Pinellas County  
2016-17 Voter Guide



This voter guide provides you with an overview of voting in Pinellas County. It also contains important dates for upcoming elections as well as information on updating your voter registration information, how to request a mail ballot

and what to expect if you are voting early or on Election Day.

Please read through the Frequently Asked Questions in this Voter Guide, and take the time to learn your rights and responsibilities as a voter and what it takes to be election ready.

Voting is one of your most important rights as a United States citizen. We encourage you to register and participate in our representative democracy by voting. Make Freedom Count!

A handwritten signature in black ink that reads "Deborah Clark".

Supervisor of Elections  
Pinellas County

# CONTENTS

Voter Registration .....	4
Update Your Voter Information.....	5
Voting by Mail .....	6
Early Voting .....	7
What to Expect at the Polls .....	8
Frequently Asked Questions .....	10
Voters with Disabilities .....	12
Voter Rights and Responsibilities .....	13
Election Dates.....	14
Supervisor of Elections Offices.....	15
Website and Social Media.....	15



Information in this Voter Guide is current as of May 1, 2016.

A copy of this voter guide is available for download at [VotePinellas.com](http://VotePinellas.com).

Pinellas County complies with the Americans with Disabilities Act. To obtain accessible formats of this document, call 727-464-VOTE (8683). If using TDD, contact the Florida Relay Service at 1-800-955-8771.

An audio version of this document is available at:  
[www.VotePinellas.com/Voter-Information](http://www.VotePinellas.com/Voter-Information)



## VOTER REGISTRATION DEADLINES

- Voter registration deadline is 29 days prior to any election.
- You must be registered with a political party in order to vote in that party's primary elections.
- Any political party change must be made at least 29 days prior to a partisan primary election in order to be valid for that election.

## VOTER REQUIREMENTS

- You must be a United States citizen.
- You must be at least 18 years old; or you may pre-register if you are 16 or 17 years old.
- You must have no current court judgment of mental incapacity with respect to voting in Florida or another state.
- You must have no felony conviction, or your civil rights have been restored by law if ever convicted of a felony. Contact the Office of Executive Clemency at 800-435-8286 to confirm your rights are restored.
- You must be registered only in this county and state, and acknowledge that any prior registration will be disclosed and canceled.

## VOTER REGISTRATION APPLICATION LOCATIONS

- [VotePinellas.com](http://VotePinellas.com)
- Supervisor of Elections Offices (see pg. 15)
- Tax Collector Offices
- Public libraries
- Public assistance offices
- Offices that serve people with disabilities
- Armed forces recruitment offices
- Centers for independent living



Pick up an application at any of the above locations. Complete and return it to any Supervisor of Elections Office.

## UPDATE YOUR VOTER INFORMATION IN A SNAP!

Update your voter registration information – including any changes to your **S**ignature, **N**ame, **A**ddress or **P**olitical party affiliation – to avoid delays at the polls on Election Day.

- Complete a voter registration application with the changes and mail or deliver it to any location listed on page 4.
- Address updates can be made at [VotePinellas.com](http://VotePinellas.com) using the address change form; emailing [Election@VotePinellas.com](mailto:Election@VotePinellas.com) (include date of birth); calling 727-464-VOTE (8683); or mailing a signed written notice with your change to the Supervisor of Elections Office (include date of birth).
- The signature in your voter file must match your signature on your mail ballot return envelope in order for your ballot to count. This signature also is used to verify your signature on a candidate or initiative petition.
- Signature updates may be made at any time, but must be received before mail ballots are canvassed in order to be accepted for an election. (F.S. 98.077)

## PHOTO AND SIGNATURE I.D.

Florida law requires voters to show both photo and signature ID to vote a regular ballot at an early voting site or at the polls. Without valid and current ID, a voter may vote a provisional ballot, which will be presented to the Canvassing Board to determine eligibility.

Acceptable valid and current forms of ID include (F.S. 101.043):

- |  |                                      |
|--|--------------------------------------|
| • Florida driver license                         | • US Passport                        |
| • Florida identification card                    | • Military ID                        |
| • Retirement Center ID                           | • Student ID                         |
| • Public Assistance ID                           | • Debit or credit card               |
| • Neighborhood Association ID                    | • Veteran health ID card             |
| • License to carry a concealed weapon or firearm | • Government-issued employee ID card |

## FLORIDA'S PRIMARY ELECTIONS

Florida is a “closed primary state.” A qualified voter is entitled to vote the ballot of the political party with which the voter is registered. All registered voters, regardless of party affiliation, may vote on issues and nonpartisan races. Voters registered with no party affiliation (NPA) are not eligible to vote in closed party primaries. If all candidates in a race have the same party affiliation and the winner of the primary election will have no opposition in the General Election, all eligible voters, regardless of party affiliation, may vote in the primary election for that race. This is known as a universal primary.

## REQUESTING A MAIL BALLOT

Any registered voter may vote by mail. Florida law requires that ALL accepted mail ballots be included in the official final election results.

The deadline to request a ballot be mailed to you is 5:00 p.m. on the 6th day prior to an election.

There are three ways to request a mail ballot:

- Visit [www.VotePinellas.com/MailBallot](http://www.VotePinellas.com/MailBallot)
- Call 727-464-VOTE (8683)
- Email [MailBallot@VotePinellas.com](mailto:MailBallot@VotePinellas.com)  
(Include DOB, home address and phone number)

A mail ballot can only be issued on Election Day for an emergency in which a voter cannot get to his/her polling place. The voter or family member must sign an affidavit to state the emergency in order to pick up a ballot.

## VOTING YOUR MAIL BALLOT

Use a black ballpoint pen to completely fill in the oval next to each selection on your ballot. If you make a mistake on your ballot, call 727-464-VOTE (8683) to request a replacement ballot.

## RETURNING YOUR VOTED MAIL BALLOT

To return your voted mail ballot, insert it into the secrecy envelope, then insert the secrecy envelope into the return envelope. Seal the return envelope.

### **BE SURE TO SIGN AND DATE THE BACK OF YOUR RETURN ENVELOPE.**

Ballots may be returned by mail by placing the required postage on the return envelope or in person to any Elections Office. Additional ballot drop-off locations may be designated for countywide elections.

A voted mail ballot cannot be accepted at any polling place on Election Day.

Voted mail ballots must be RECEIVED at a  
Supervisor of Elections Office by

**7:00 P.M. ON ELECTION DAY**

and cannot be accepted at polling places.

Voters are advised to allow at least 5 days for their ballot to be returned by mail to the Supervisor of Elections Office.

Voters can track their mail ballot at [VotePinellas.com](http://VotePinellas.com).

# PICKING UP SOMEONE ELSE'S BALLOT

By signed letter, a voter may designate another person to pick up his/her mail ballot no sooner than the 5th day prior to an election. The designee must provide a photo ID and complete an affidavit.

It is a misdemeanor for a person to accept payment or other benefit for distributing, requesting or otherwise physically possessing more than two mail ballots per election in addition to his/her ballot or a family member's.

# EARLY VOTING

State law requires that early voting be conducted from 10 days prior through 3 days prior to an election; 8 hours minimum per day; 12 hours maximum per day. In addition, early voting may begin up to 15 days prior and end 2 days prior to an election.

2016 EARLY VOTING SCHEDULE	
2016 PRESIDENTIAL PREFERENCE PRIMARY	<b>Dates:</b> March 5–13 <b>Times:</b> Mon.-Fri., 10 a.m.-6 p.m. Sat.-Sun., 9 a.m.-5 p.m. <b>Locations:</b> 3 SOE Offices <i>(see pg. 15 for addresses)</i>
2016 PRIMARY ELECTION	<b>Dates:</b> August 20–28 <b>Times:</b> Mon.-Fri., 10 a.m.-6 p.m. Sat.-Sun., 9 a.m.-5 p.m. <b>Locations:</b> 3 SOE Offices <i>(see pg. 15 for addresses)</i>
2016 GENERAL ELECTION	<b>Dates:</b> October 24–November 6 <b>Times:</b> Daily, 7 a.m.-7 p.m. <b>Locations:</b> 3 SOE Offices <i>(see pg. 15 for addresses)</i> The Centre of Palm Harbor 1500 16 <sup>th</sup> St., Palm Harbor Gulfport Neighborhood Ctr 1617 49 <sup>th</sup> St. S., Gulfport

\*Municipalities are not required to provide early voting for their elections.

# WHAT TO EXPECT ON ELECTION DAY



## POLLS ARE OPEN 7:00 A.M. TO 7:00 P.M. ON ELECTION DAY

You are required to vote in the precinct where you live. Your voter information card provides your precinct number and polling place, or you can use the Find Your Precinct feature online at [VotePinellas.com](http://VotePinellas.com). (If your polling place has changed, you will receive a new voter information card prior to a county, state or federal election.) Check your polling place prior to municipal elections.

**Provisional Ballots:** Voters who do not provide photo and signature ID, or whose eligibility cannot be determined at the polls, may vote a provisional ballot. Immediately following the election, provisional ballots are researched, and all ballots accepted by the Canvassing Board are included in the official election results.

Pinellas County has electronic poll books. Voters are able to make out-of-county address changes at the polls and vote a regular ballot.





# ST AT THE POLLS AY

## ARE YOU ELECTION READY?

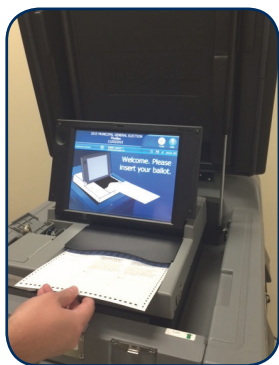
Be sure to bring photo and signature ID to the polls. *(See pg. 5 for a list of acceptable forms of I.D.)*

Make sure your voter registration information is updated to avoid delays.

*(See pg. 5 for directions on updating your voter information)*

## WHEN YOU ARRIVE AT THE POLLS:

1. Present your valid and current photo and signature ID.
2. Sign the signature keypad of the EVID (electronic poll book) with the provided stylus.
3. Receive your paper ballot, pen and secrecy folder, and proceed to a privacy booth.
4. Use the black ballpoint pen provided to completely fill in the oval next to each of your selections.
5. Review your ballot.
6. If you wish to make changes, request another ballot.
7. If you are satisfied with your selections:
  - Put your ballot in the secrecy folder provided, and take it to the scanner.
  - Insert your ballot in the ballot scanner (see photo to right).
  - If your ballot is marked correctly, the scanner will record your votes and deposit your ballot into a locked ballot box.



If you need assistance at any time during the voting process, do not hesitate to ask a poll worker. They are trained to guide you through the process and answer your questions.

# FREQUENTLY ASKED QUESTIONS

## **Why is Pinellas County using paper ballots?**

Florida law requires that all Florida voters use a paper optical scan ballot whether voting by mail, at an early voting site or at the polls on Election Day.

## **What voting system does Pinellas County use?**

During Early Voting and on Election Day, voters use the Election Systems & Software DS 200 (Digital Scanner). The AutoMARK Voter Assist Terminal ballot-marking device is available for voters with special needs or disabilities.

## **What happens if I make a mistake on my ballot?**

Return the ballot to a poll worker and ask for another one. You can have up to three ballots (including original). You will be asked to place your ballot in a spoiled ballot envelope, seal the envelope and give it to a poll worker.

## **What happens if I make a mistake on the third ballot I am allowed?**

State law does not allow you to be given a fourth ballot. Your first two spoiled ballots will be in sealed envelopes, so you will need to use your third ballot.

## **Does it matter how I insert my ballot into the optical scanner?**

You can place either end of the ballot into the scanner, with either side up.

## **How do I know that my votes are being counted?**

The scanner screen message indicates your votes are being recorded and your ballot has been accepted.

## **What happens if I do not vote in any of the races?**

The ballot scanner will alert you if it does not detect any votes on the ballot. You will have the option to accept the ballot as is or have it returned to you for corrections.

## **What happens if I do not vote in every race?**

The ballot scanner will accept your ballot and count all races voted.

## FREQUENTLY ASKED QUESTIONS *(CONT.)*

### **What happens if I vote for too many candidates?**

The ballot scanner will alert you if you selected too many candidates in a race. You have the option to accept the ballot or have it returned to you for corrections.

### **How will I correct a ballot with one or more overvotes?**

An overvoted ballot cannot be corrected. A poll worker will give you a “spoiled ballot” envelope for your first ballot and give you a new ballot (see pg. 10).

### **Can I write in a candidate?**

Only races in which there is a qualified write-in candidate will provide you a space to write in a candidate's name and fill in the oval, and only votes for qualified write-in candidates will be counted.

### **Can I change my ballot once it has been scanned and accepted by the ballot scanner?**

No. Once a ballot has been accepted, it cannot be retrieved.

### **Is there a paper trail?**

Yes. Your paper ballot secured in the ballot box is the official record of your votes and is available for recounts and audits.

### **How long are paper ballots kept?**

Ballots with federal races or issues must be retained for 22 months. All other ballots must be kept for 12 months.

### **In the event of scanner failure, what happens to my ballot?**

You have the option to wait until a replacement scanner arrives or place the ballot in the auxiliary portion of the ballot box to be processed through the scanner after the polls close.

### **In the event of a power outage, what happens?**

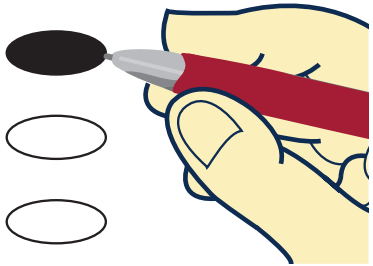
The internal backup battery keeps the scanner operating.

### **If I receive a ballot in the mail but decide to vote at my polling place, can I do that?**

Yes. The simplest way to do this is to bring your mail ballot kit to your polling place and ask a poll worker to cancel the ballot so you can vote at the polling place.

# PROPERLY MARK YOUR BALLOT

Whether voting by mail, early voting or at a polling place on Election Day, be sure to properly mark your ballot by using a black ballpoint pen to completely fill in the ovals next to your choices.



When you have completed your ballot, carefully review your ballot and make sure all the ovals are filled in next to your selections.

Stray marks may be read by the scanner as an overvote. Circled or underlined selections may be read by the scanner as blank. Also, make sure you did not skip a race unintentionally.

## VOTERS WITH DISABILITIES

An ADA-accessible voting machine, the AutoMARK, will be available at each early voting location and Election Day polling place.



This ballot-marking device uses a paper optical scan ballot. It provides voters with disabilities the options of an audio function with headset, a Braille keypad, a zoom-in large print feature, a sip-and-puff device, and a two-switch paddle device.



## NEED ASSISTANCE? WE CAN HELP



If you have any questions, ask a poll worker before you insert the ballot into the scanner. Once a ballot has been accepted, it cannot be retrieved.

## VOTER'S BILL OF RIGHTS *(F.S. 101.031)*

Each registered voter in this state has the right to:

1. Vote and have his or her vote accurately counted.
2. Cast a vote if he or she is in line at the official closing of the polls in that county.
3. Ask for and receive assistance in voting.
4. Receive up to two replacement ballots if he or she makes a mistake prior to the ballot being cast.
5. An explanation if his or her registration or identity is in question.
6. If his or her registration or identity is in question, cast a provisional ballot.
7. Written instructions to use when voting, and upon request, oral instructions in voting from election officers.
8. Vote free from coercion or intimidation by election officers or any other person.
9. Vote on a voting system that is in working condition and that will allow votes to be accurately cast.

## VOTER RESPONSIBILITIES *(F.S. 101.031)*

Each registered voter in this state has a responsibility to:

1. Familiarize himself or herself with the candidates and issues.
2. Maintain with the office of the Supervisor of Elections a current address.
3. Know the location of his or her polling place and its hours of operation.
4. Bring proper identification to the polling station.
5. Familiarize himself or herself with the operation of the voting equipment in his or her precinct.
6. Treat precinct workers with courtesy.
7. Respect the privacy of other voters.
8. Report any problems or violations of election laws to the Supervisor of Elections.
9. Ask questions, if needed.
10. Make sure that his or her completed ballot is correct before leaving the polling station.

# 2016-17 ELECTIONS

## **PRESIDENTIAL PREFERENCE PRIMARY & MUNICIPAL ELECTIONS**

– MARCH 15, 2016 –

**Registration Deadline:** February 16

**Early Voting:** March 5 – 13

## **PRIMARY ELECTION**

– AUGUST 30, 2016 –

**Registration Deadline:** August 1

**Early Voting:** August 20 – 28

## **GENERAL ELECTION**

– NOVEMBER 8, 2016 –

**Registration Deadline:** October 11

**Early Voting:** October 24 – November 6

## **MUNICIPAL ELECTIONS**

– MARCH 14, 2017 –

**Registration Deadline:** February 13

## **ST. PETERSBURG PRIMARY ELECTION**

– AUGUST 29, 2017 –

**Registration Deadline:** July 31

## **COUNTY REFERENDUM & MUNICIPAL ELECTIONS**

– NOVEMBER 7, 2017 –

**Registration Deadline:** October 10

**Early Voting:** TBD

\*Municipalities are not required to provide  
early voting for their elections.

FOR UPDATED ELECTION INFORMATION:

 727-464-VOTE (8683)

 [www.VotePinellas.com/Election-Information](http://www.VotePinellas.com/Election-Information)

# SUPERVISOR OF ELECTIONS OFFICES

727-464-VOTE (8683)

## **PINELLAS COUNTY COURTHOUSE**

315 Court Street, Room 117, Clearwater, FL 33756

FAX: 727-464-4158

## **ELECTION SERVICE CENTER (ESC)**

Starkey Lakes Corporate Center

13001 Starkey Road, Largo, FL 33773

FAX: 727-464-6239

## **COUNTY BUILDING**

501 First Avenue North, St. Petersburg, FL 33701

(Entrance on 5th Street North)

FAX: 727-582 - 7798



DEBORAH CLARK  
SUPERVISOR OF ELECTIONS  
PINELLAS COUNTY

For updated election information between  
publications, please visit [VotePinellas.com](http://VotePinellas.com).